

Wheel-Horse

Reg. U. S. Pat. Off.

CBR-32 CUTTER BAR

PARTS LIST AND INSTRUCTIONS

ASSEMBLING

The cutter bar is shipped complete in one package. Mount the drive unit (A) to the cutting unit with four $\frac{3}{4}$ x 1 carriage bolts. It may be bolted in the center or in an offset position to the right. The drive block must be inserted in the saddle block on the cutting unit at the same time. Now the cutter bar is ready for installation under the tractor.

ATTACHING TO THE TRACTOR

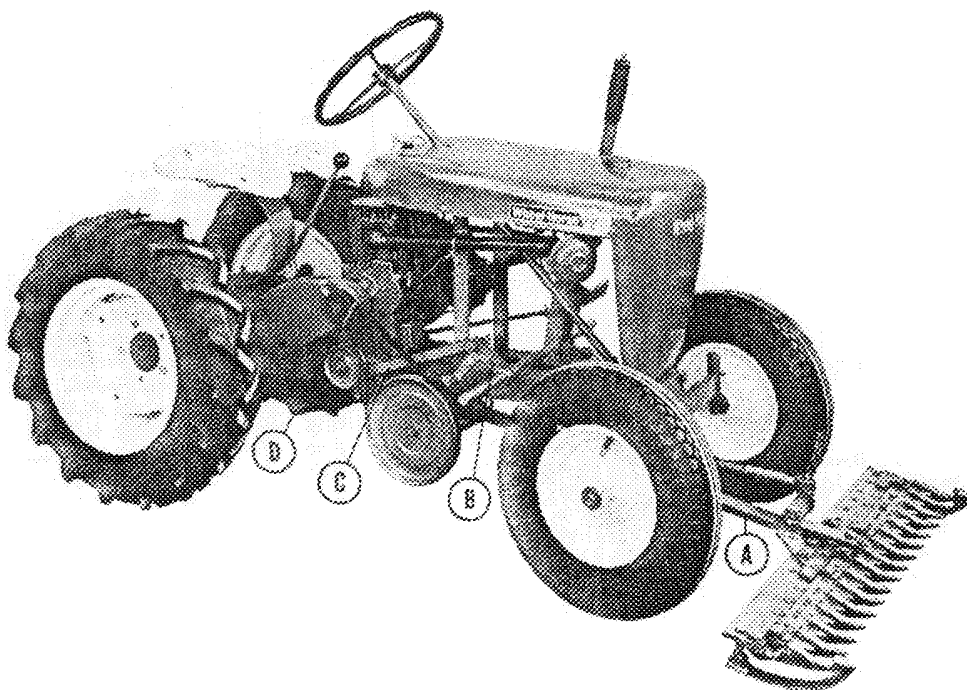
Slide the drive unit of the cutter bar underneath the tractor from the front between the front wheels. Using the two 7" machine bolts, provided, bolt the hanger plates on the outside of the tractor frame and in the rear mounting holes. Mount the clutch pedal (B) on the right foot rest with the two shaft collars provided. Place the drive belt over the power take off pulley and then over the 8" pulley on the drive unit. Connect the clutch pedal (B) to the clutch link (C). The idler pulley should work against the rear strand of the belt as shown. Connect the lift link to the lift lever. With the cutter bar in the down or cutting position and the belt engaged, adjust the belt guard (D) furnished with the tractor so the fingers are equally spaced over the belt.

LUBRICATION AND OPERATION

There are five high pressure grease fittings on the unit. Lubricate these fittings each time before operation. Oil the drive block at the same time. Depress the clutch pedal (B) which will disengage the idler pulley. Start the engine. To start the cutter bar, lower it to the cutting position and release the clutch. The idler spring will maintain proper belt tension at all times. Cutting height may be adjusted by removing spacers (D) under the skids.

CAUTION

DO NOT make any adjustments or lubricate this unit while the engine is running. Strict care should be used to keep hands and feet away from the front of the cutting unit while in operation.

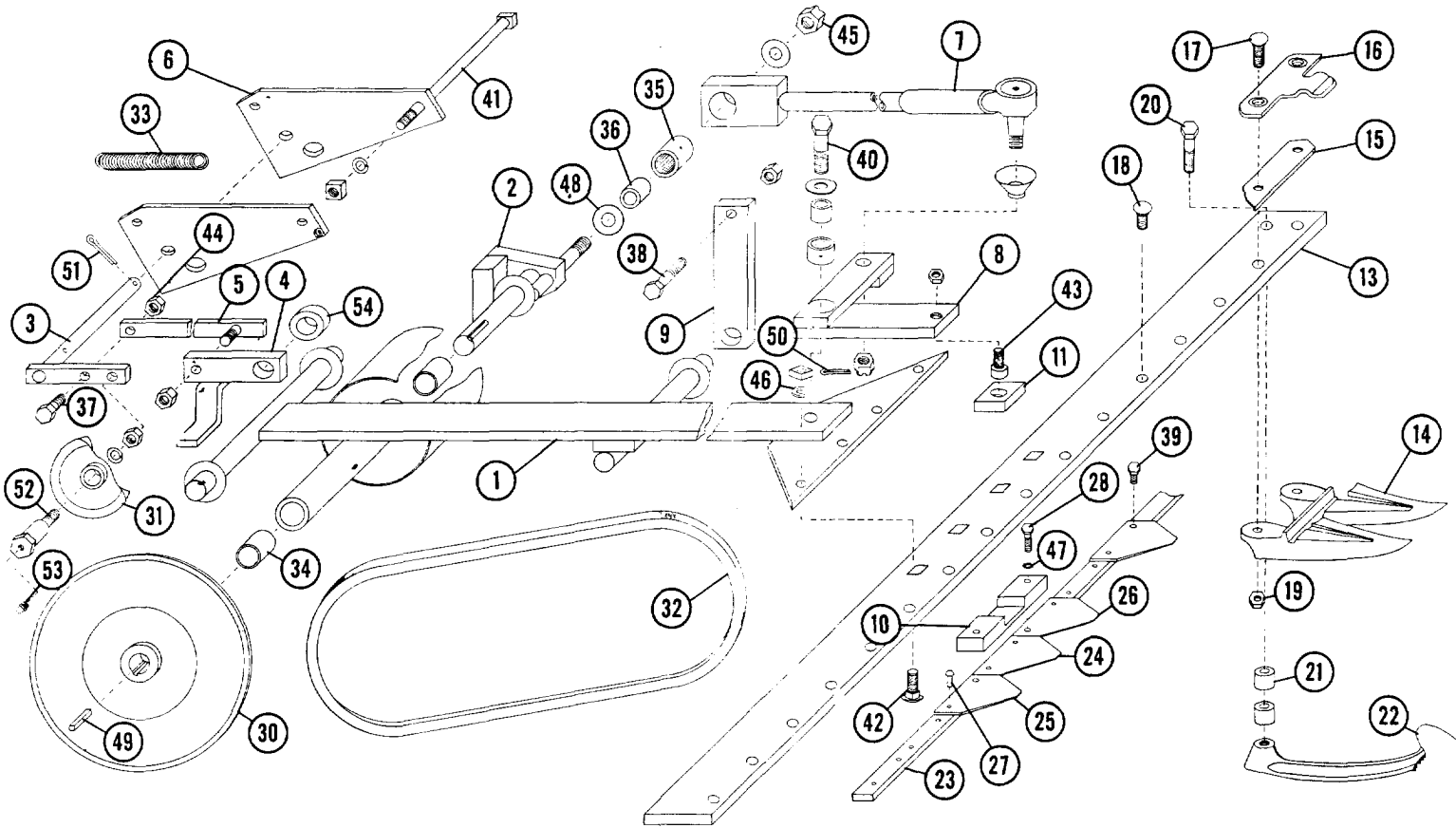


WHEEL-HORSE PRODUCTS



SOUTH BEND, INDIANA

Parts List



PARTS LIST for CBR-32

Ref. No.	Part No.	Description	No. Req.	Ref. No.	Part No.	Description	No. Req.
1	2240	Frame Assembly	1	29	2238	Knife Assembly, Includes No. 23, 24, 27	1
2	2207	Crankshaft Assembly	1	30	1603	V-Pulley	1
3	2245	Idler Lever Assembly	1	31	1602	Idler Pulley	1
4	2248	Pedal, Clutch	1	32	1563	V-Belt, 39 A	1
5	2251	Link, Clutch	1	33	1014	Spring Idler	1
6	2239	Hanger Plate	2	34	1504	Bearing, Bronze	2
7	2253	Pitman Assembly	1	35	1508	Bearing, Needle	2
8	2254	Rocker Arm Assembly	1	36	1507	Inner Race	2
9	2260	Lift Link	1	37	1062	Cap Screw, Hex Hd., 3/8-16 x 1	1
10	2228	Saddle Block	1	38	1064	Cap Screw, Hex Hd., 3/8-16 x 1 1/2	1
11	2227	Drive Block	1	39	1056	Cap Screw, Hex Hd., 1/4-28 x 1	2
12	2237	Cutting Unit Complete	1	40	1057	Cap Screw, Hex Hd., 1/2-20 x 2 1/4	1
13	2229	Guard Bar	1	41	1162	Machine Bolt, 3/8-16 x 7	2
14	2230	Twin Guard	8	42	1063	Carriage Bolt, 3/8-16 x 1	4
15	2231	Wear Plates	4	43	1059	Socket Hd. Cap Screw, 3/8-16 x 3/4	1
16	2232	Clip, Hold Down	4	44	1080	Hex Nut, Jam 3/8-16	2
17	1068	Plow Bolt, 3/8-16 x 1 1/4	8	45	1044	Castle Nut, 1/2-20	3
18	1069	Plow Bolt, 3/8-16 x 1	8	46	1039	Lockwasher, 3/8	7
19	1016	Nut, Hex 3/8-16	22	47	1067	Lockwasher, 1/4	4
20	1015	Cap Screw, Hex Hd., 3/8-16 x 1 1/4	2	48	1017	Washer, Flat, 1/2 SAE	3
21	2233	Spacer	4	49	1005	Key, Square, 3/16 x 1	1
22	2234	Skid	2	50	1002	Cotter Pin, 1/8 x 1	7
23	2235	Knife Bar	1	51	1137	Cotter Pin, 3/16 x 1	2
24	2236	Knife Section	11	52	1049	Shoulder Bolt	1
25	2261	Knife Section, R.H.	2	53	1030	Grease Fitting	5
26	2262	Knife Section, L.H.	2	54	1085	Shaft Collar	2
27	1071	Rivet, 1 3/4 x 1/2	2				
28	1055	Cap Screw, Hex Hd., 1/4-28 x 1 1/2	2				